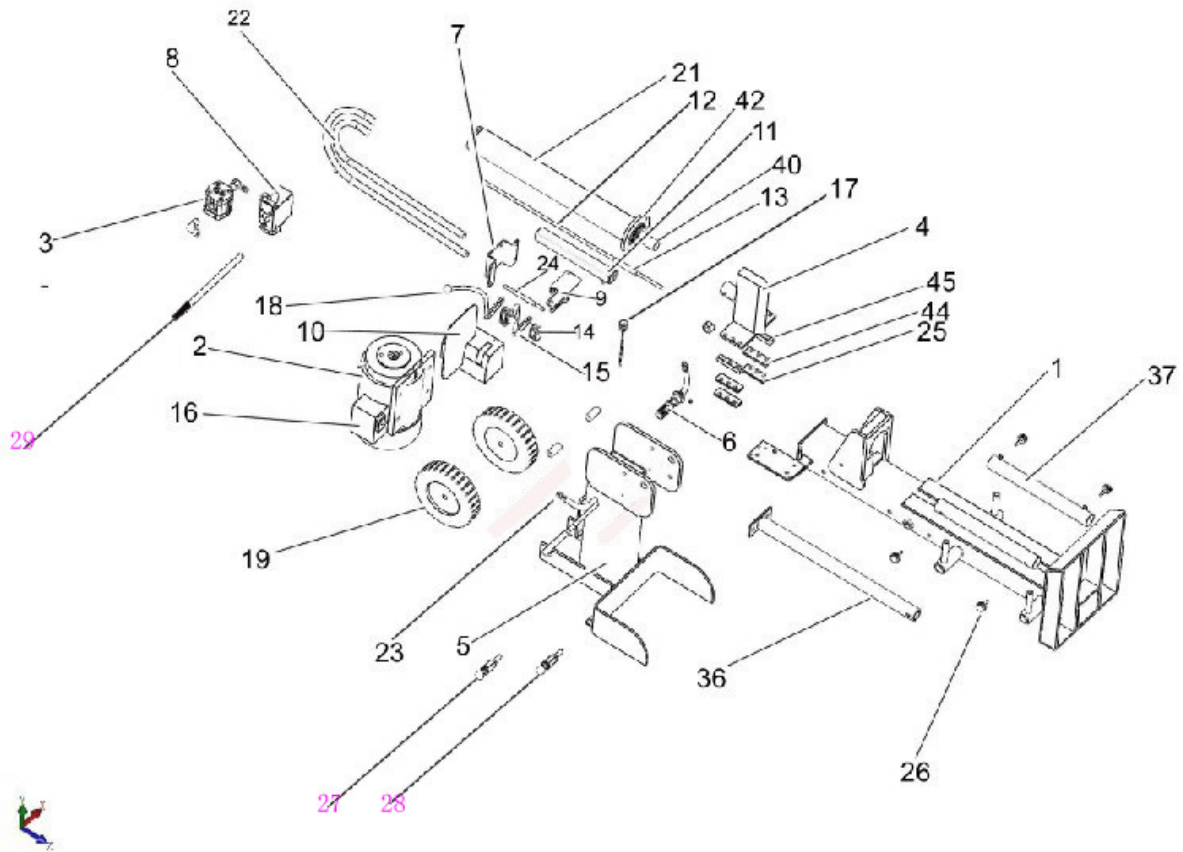


VHLS10T



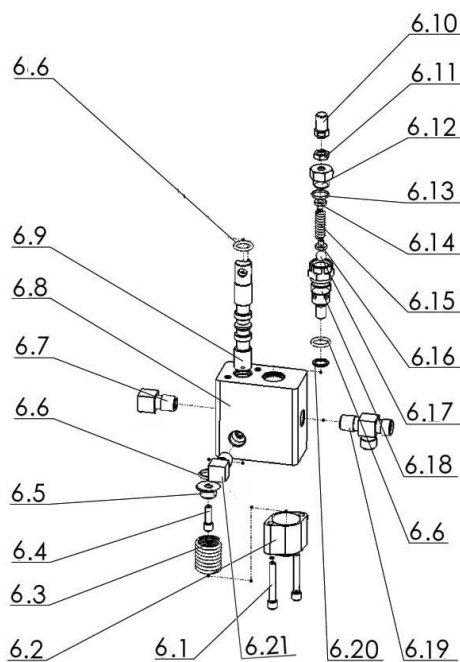
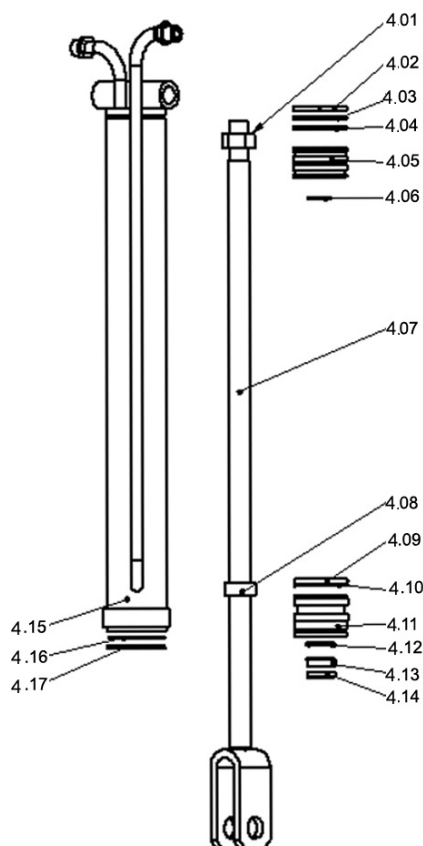
CAMON®

OUTDOOR POWER EQUIPMENT



Part No.		Description	Qty
1	VHLS10T-1	Work Table Welding Unit	1
2	VHLS10T-2	Motor	1
3	VHLS10T-3	Pump	1
4	VHLS10T-4	wedge	1
5	VHLS10T-5	Oil Tank	1
6	VHLS10T-6	Filter	1
7	VHLS10T-7	Valve Seat	1
8	VHLS10T-8	Double Speed Valve	1
9	VHLS10T-9	Valve Pressing Plate	1
10	VHLS10T-10	Control Box	1
11	VHLS10T-11	Block Pipe	1
12	VHLS10T-12	Block Rod	1
13	VHLS10T-13	Adjusting Pipe	1
15	VHLS10T-15	Operation Handle	2
16	VHLS10T-16	Switch	1
17	VHLS10T-17	Oil Level Indicator	1
18	VHLS10T-18	Operation Ball M6x20	2
19	VHLS10T-19	Wheel	2
21	VHLS10T-21	Cylinder Assembly	1
22	VHLS10T-22	Hi-Pressure Hose	3
23	VHLS10T-23	Rubber Hose	2
24	VHLS10T-24	Block Pin	1
25	VHLS10T-25-44	Guiding Support	2

26	VHLS10T-26	Plum handle	4
27	VHLS10T-27	Upper bolt	2
28	VHLS10T-28	Lower bolt	2
29	VHLS10T-29	handle	1
36	VHLS10T-36	Support leg	1
37	VHLS10T-37	Wood supporting frame	2
40	VHLS10T-40	Piston rod	1
42	VHLS10T-42	Flange For Cylinder	1
44	VHLS10T-25-44	Lower Guiding	2
45		Guiding liner	2



NO.			Name	Qty
Piston rod assembly	4.01	VHLS10T-4.01	Nut M24X2	1
	4.02	VHLS10T-4.02-4.06	Belt	1
	4.03		Gasket Φ 70	1
	4.04		"O" ring Φ 70X3.1	1
	4.05		Piston (moving end)	1
	4.06		"O" ring Φ 20	1
	4.07		VHLS10T-4.07	Piston
	4.08	VHLS10T-4.08	Bush	1
	4.09	VHLS10T-4.09-4.14	"O" ring Φ 70	1
	4.10		Stopper Φ 70	1
	4.11		Piston (fixing end)	1
	4.12		Seal ring STM-03-22 Φ 28	1
	4.13		Seal ring Φ 28	
	4.14		Dustproof ring Φ 28	1
	4.15	VHLS10T-4.15	Hydraulic cylinder column	1
	4.16	VHLS10T-4.16	Stopper Φ 70	1
	4.17	VHLS10T-4.17	Stopper Φ 65	1
Direction exchanging valve assembly	6.1	VHLS10T-6.01	M6x45 inner six angle Bolt	2
	6.2	VHLS10T-6.2-6.18	Valve front cover	1
	6.3		Spring $\text{Ø}3 \times 45$	1
	6.4		M6x15 inner six angle bolt	1
	6.5		Spring bush	1

	6.6		"o" ring Ø22x2.4	3	
	6.7	VHLS10T-6.7	G3/8"xM18 straight angle curly head	1	
	6.8	VHLS10T-6.8	Valve	1	
	6.9	VHLS10T-6.9	Valve rod	1	
	6.10	VHLS10T-6.2-6.18	Adjusting bolt	1	
	6.12		M8 screw cap	1	
	6.13		Abnormal screw cap	1	
	6.14		"O" ring	1	
	6.15		Spring cover	1	
	6.16		Unloading press spring	1	
	6.17		Sealed steel ball	1	
	6.18		Unloading valve axle core	1	
	6.19		VHLS10T-6.19	Three-way joint	1
	6.20		VHLS10T-6.20	Sealed cupreous washer	1
	6.21	VHLS10T-6.21	M6x45 inner six angle Bolt		